

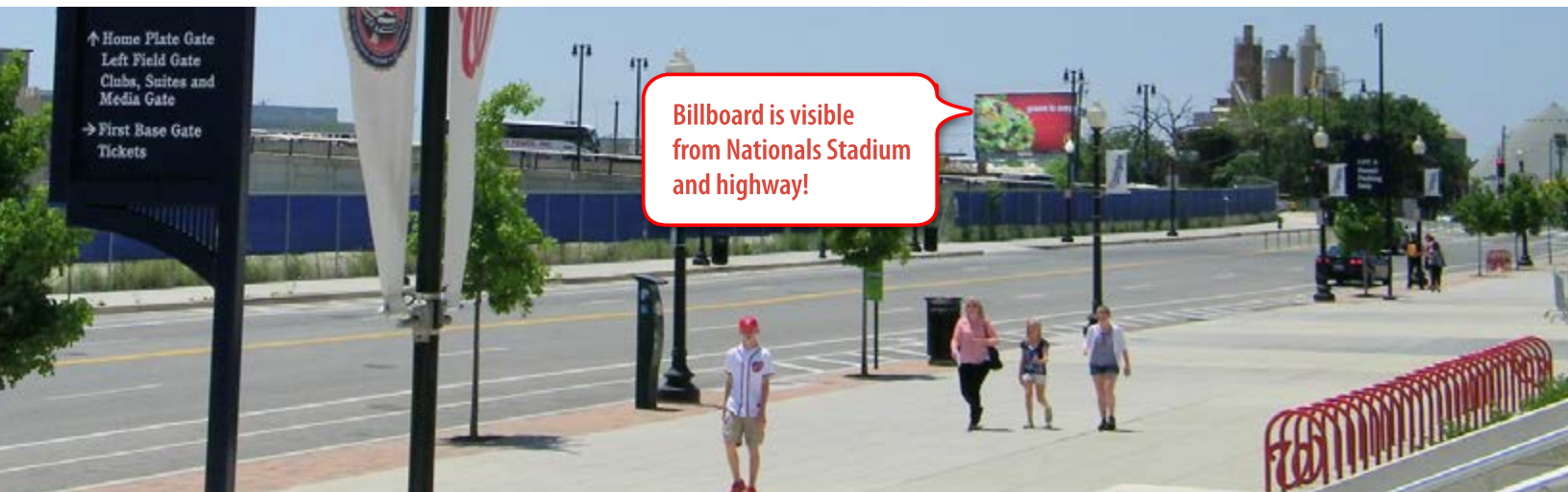


ILLUMINATED BULLETIN ON SOUTH CAPITAL STREET, ENTRANCE TO NATIONALS STADIUM!!!

WASHINGTON, DC

1601 South Capitol Street, SW, Washington, DC 20003 - This is THE ONLY inbound bulletin on South Capitol, located on the South Capitol St Bridge AT THE ENTRANCE of the NEW NATIONALS STADIUM!!! This bulletin sits beneath the south side of The Capitol Dome. This bulletin stands just outside the entrance to the new Washington Navy Yard and just ½ mile from the Headquarters of the Democratic National Committee.

📞 DC Office: **202.337.1839** 📧 chris@capitoloutdoor.com 🌐 www.CapitolOutdoor.com



📞 DC Office: 202.337.1839

✉️ chris@capitoloutdoor.com

🌐 www.CapitolOutdoor.com



FACING South

READ Left-hand

DEC 95,000

SIZE 19'6" h x 48' w

READ & TRAFFIC

This is THE ONLY inbound bulletin on South Capitol, located AT THE ENTRANCE of the NEW NATIONALS STADIUM!!! Shows to everyone traveling inbound on the South Capitol Bridge. Left-hand read, HEAVY TRAFFIC. DEC 95,000



TAB ID 30640466 TOTAL IMPs 171,717 LATITUDE 38.870251 LONGITUDE -77.00942



SIZE & PRODUCTION 19'6" tall by 48' wide. Standard bulletin. Showing size is 19'6" tall x 48' wide. Production size is 20' 2" tall x 48' 8" wide which is 4 inches all the way around on all four sides - 3 inch pocket with a 1 inch wrap.

TERM 4 Weeks

SHIPPING Service Outdoor, c/o Maryland Glass Block, Attn: John Klem, 812 West Patapsco Ave, Building E and F, Baltimore, MD 21230, 410-952-9399

📞 DC Office: 202.337.1839

✉️ chris@capitoloutdoor.com

🌐 www.CapitolOutdoor.com